

EasyIO Wi-Fi Controller 14 points EasyIO-FW-14



The EasyIO-FW-14 is a new breed, high performance, freely programmable, wireless Wi-Fi Sedona controller. It has never been easier to extend your BMS because of its wireless possibilities. You will save on labor and wiring. The EasyIO-FW-14 is a perfect fit for vertical markets such as schools and retail, to have extended IO for the F-series controllers, without any downtime during installation as the network can be wireless. It's ideal for all kind of applications such as fan coils, AHU's, room and stand-alone applications, featuring SOX, TCOM, FGP2P and BACnet communication protocols.

The EasyIO-FW-14 can be programmed and live commissioned via free CPT Tools and an integrated HTML5 dashboard. It has BACnet IP server / client, BACnet MSTP client (combination of BACnet MSTP client and BACnet IP client up to five devices total) and two Ethernet ports for daisy chain connection wiring. Wired and wireless deployment is encouraged, so there is no need to worry about IT. The EasyIO-FW-14 includes 8 UI (voltage and resistance), 4 x AO (Voltage) and 2 x DO with 24VAC volt free contact relays. For floating control, the optional FR-02 module is available to add to the FW-14.

Specification:

Power Supply	24VAC +/- 5% or 24V DC +20%/-15%
Consumption	500 mA
Operating temp	0 to 65 °C (32 to 150 °F)
Storage temp	-20 to 65 °C (-4 to 150 °F)
Operating humidity	10% to 70% relative humidity non-condensing
Dimensions	191 x 104 x 44 mm (L x W x H)
Material	UL Approved Plastic
Weight	410g

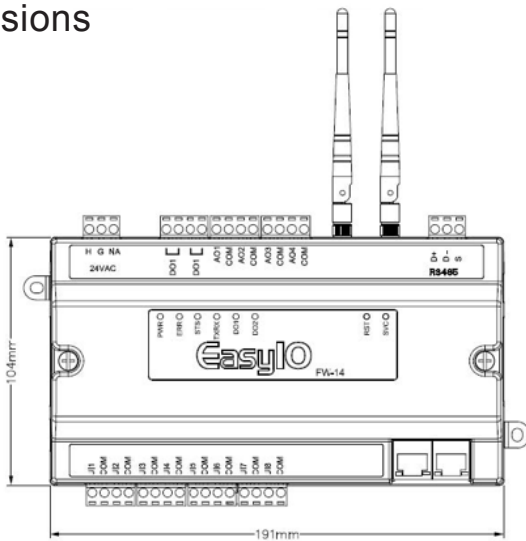
Inputs & Outputs:

Universal Input	8xUI 12-Bit ADC (with PGA) Voltage: 0 ~ 10V DC (+/- 0,05V) Resistance input: 500 ohms to 500K ohms (+/-10 Ohm) Thermistor Sensor: 10K, 10K Shunt, 20K, 1K Balco, 1K Platinum: All (+/- 0.1 °C) UI as DI: Voltage Free Contact
Digital output	2xDO (with LED's for status) Pilot duty: 24VAC, 2.0A 24VDC, 2.0A Type: Relay Contacts, SPST NO, 48VA at 24VAC
Analog Output	4xAO 12-Bit DAC Voltage: 0~10V, Min Impedance 10k Ohm
Communication:	
Physical Interface 1 (Port 1)	EIA-485 Two-wire, Half Duplex
BACnet Baud Rate:	Speed: (9.6K, 19.2k, 38.4K), Data Bit: (8 bits), Parity: (None)
WiFi	WIFI (802.11b/g/n)
Ethernet	2 Ethernet Ports 10/100M
Ethernet/WiFi Support	IP, TCP, UDP, ICMP, HTTP, FTP
Application Support	Sedona, BACnet MSTP Client, BACnet IP Server/Client and Tcom

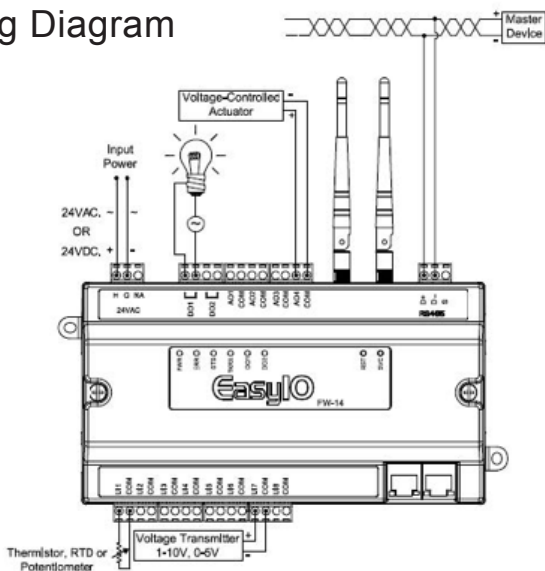
EasyIO Wi-Fi Controller 14 points EasyIO-FW-14



Dimensions



Wiring Diagram



The FW-14 comes with one standard RS485 driver to support BACnet MSTP Client. The FW-14 also comes with two Ethernet Ports to program the Sedona Application, TCOM, FGP2P, BACnet and for web configurations.

The concept behind the FW series is that the FW-14 is a free programmable controller that perfectly fits in a network of controllers, or stand-alone because of its own real-time clock. The available resources inside the controller are not limited to the 14 I/O so you will be surprised by its high power.

Features:

- First EasyIO controller based on Wi-Fi Technology
- 8 UI
- 4 AO (voltage)
- 2 Relay DO
- 1 RS485
- 2 Ethernet 10/100 BaseT port
- Support Wifi 802.11 b/g/n
- Support Sedona VM
- Support SOX, TCOM, FGP2P
- BACnet Client IP / MSTP (5 devices)
- BACnet IP server
- SQLite (10 tables x 20 columns x 500 records)
- Email
- Dashboard (Freeboard)



EasyIO Wi-Fi Controller 14 points EasyIO-FW-14



Optional antenna's

There are two optional Wi-Fi antenna's for the EasyIO FW-series. They can extend the Wi-Fi signal of an FW controller, if it's, for example, mounted inside a panel.

- EIO-FW-ANT-1
Single 3dBi antenna with cable and magnetic base
- EIO-FW-ANT-2
Double 3dBi antenna with cable and magnetic base

